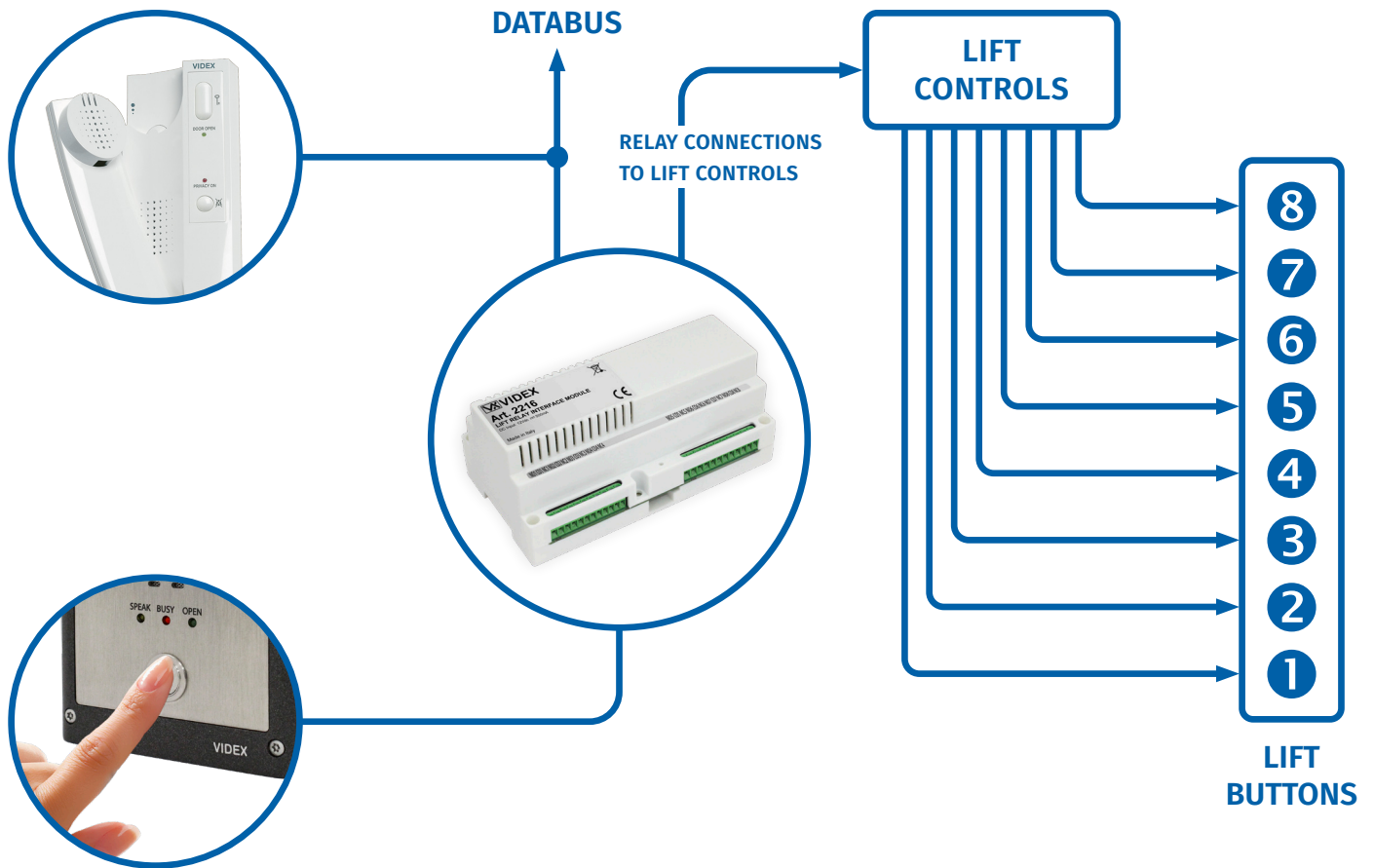


VX2200 DIGITAL SYSTEM LIFT INTERFACE

ART.2216 LIFT INTERFACE MODULE



Programmable lift interface module for the VX2200 digital system.

A new addition to the VX2200 digital system is the Art.2216 lift interface module. The interface module enables lift access management within a block of apartments such as controlling the calling of a lift and restricting access to certain floors in the building if required.

When a resident grants access to a caller by pressing the lock release button on their apartment audiophone or videophone, it will release the main door to allow access to the building whilst also calling the lift and allowing it to travel to the occupant's floor.

Each apartment can be independently programmed to grant access to one or more floors and can be programmed to interface with one or more intercom panels. Programming is carried out using the VX2200 PC software (2X00PC) by connecting the PC to the lift interface via a micro USB connection.

The module includes 8 independent dry contact relays to control up to 8 floors (1 floor per relay). Multiple modules (up to 16 max.) can be connected on the same bus to access up to 128 floors in total. Additionally the interface has 2 auxiliary inputs, an RS485 bus connection for an alternative means of programming via PC software (will require an Art.481 RS485 to USB converter). The RS485 bus will also be capable of connecting the lift interface to the Videx IP system in the future.



2 WIRE BUS



PC SOFTWARE

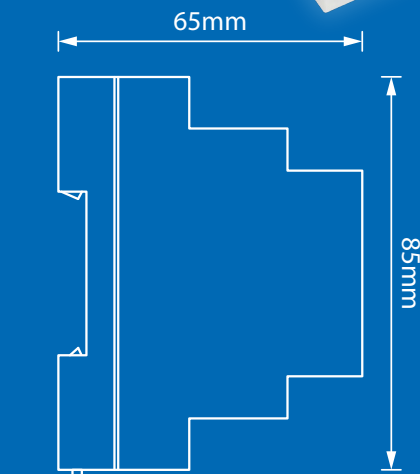
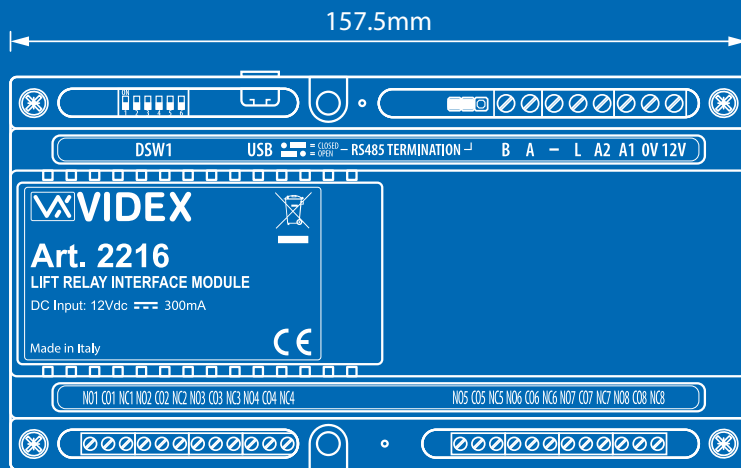
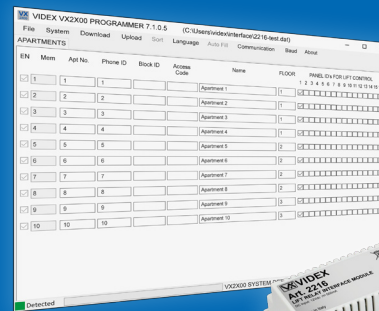


USB CONNECTIVITY

VIDEX[®]
www.videxuk.com

Part No.	System	Description
2216	VX2200	VX2200 Lift Interface module
SP37		2x00 PC programming software (inc. USB cable)
HDR-15-12	PSU's	Slim line 12Vdc, 1.25A power supply
521B		13.8Vdc, 1A power supply including battery back up facility

(please note: the lift interface can also be powered by the 12Vdc supply from the 2291A and 2291V series cabinets when incorporated into a larger multi-level system).



Key Features:

- Compatible with the full range of VX2200 intercom panels and also the Art.2206N block exchange device.
- Connect up to 16 Art.2216 modules (max.) on the same L/-databus, allowing control for up to 128 floors (8 floors per device).
- 8 relay outputs (1 floor per relay).
- 2 auxiliary inputs.
- Selectable relay time: 1 second pulse or 5 seconds (via the dip-switches).
- Programming & setup using the VX2200 digital PC software and a series of dip-switches.
- PC connection via micro USB or alternatively via RS485 bus connection (when used with the Art.481 RS485 to USB converter).
- BUS operation mode selection when used with an Art.2206N bus exchange device.
- Housed in white impact resistant ABS plastics, 9 modules A type DIN box for surface mounting.

Technical Specification:

- Working voltage: 12Vdc.
- Current consumption: 300mA max.
- Memory capacity: up to 998.
- Programming method: via 2X00PC software (SP37) & dip-switches.
- Unit ID's: 16 max.
- External connections: micro USB & RS485 bus.
- No. of relays: 8 (C, NO, NC - 5A @ 24Vdc, 6A @ 120Vac & 2A @ 240Vac).
- No. of floors: 8 floors per module (1 floor per relay).
- Auxiliary inputs: 2 (A1, A2).
- RS485 bus: Yes (A, B).
- Mounting: surface, direct wall mount or fitted to DIN rail.
- Dimensions (mm): 85 [W] x 157.5 [L] x 65 [D].
- Working temperature: -10 +50°C.

SOUTHERN OFFICE

1 Osprey, Trinity Park,
Trinity Way, London,
E4 8TD
T 0370 300 1240 • F 0208 8523 5825

NORTHERN OFFICE

4-7 Chillingham Ind. Estate,
Chapman Street,
Newcastle Upon Tyne, NE6 2XX
T 0370 300 1240 • F 0191 224 1559



sales@videxuk.com • www.videxuk.com

